

OUTLINE

KYUSHU UNIVERSITY

九州大学 工学部

大学院工学府・大学院工学研究院

SCHOOL OF ENGINEERING

GRADUATE SCHOOL OF ENGINEERING

FACULTY OF ENGINEERING

工学部長メッセージ



九州大学工学部長

久枝 良雄

Message from Dean

Yoshio Hisaeda

Dean, School of Engineering Kyushu University

九州大学工学部は1911年(明治44年)に九州帝国大学工科大学として創立され、日本でも有数の長い歴史を有しています。その後、1919年(大正8年)に九州帝国大学工学部、1947年(昭和22年)に九州大学工学部となり現在に至っています。この間、拠点大学の基幹学部として先導的研究と充実した工学教育を行い、これまでに約49,000名の卒業生を送り出し、工学・技術・産業の発展に貢献してきました。工学部には、現在、6つの学科(建築学科、電気情報工学科、物質科学工学科、地球環境工学科、エネルギー科学科、機械航空工学科)があり、工学のあらゆる分野の基礎教育を行っています。一方、九州大学の大学院には複数の工学系学府があり、物質科学工学、地球環境工学、機械航空工学の学生が主として進学する工学府のほかに、システム情報科学府、総合理工学府、人間環境学府、統合新領域学府などが設置されています。工学部には一学年に800名以上の学生が在籍していますが、その約85%が大学院に進学し、より高いレベルの学問と研究に励んでいます。

The Faculty of Engineering in Kyushu University is the fourth oldest faculty among Japanese universities, and was founded as the College of Engineering of Kyushu Imperial University in 1911. In 1919, the College of Engineering was reorganized as the Faculty of Engineering. In 1947, the Faculty of Engineering of Kyushu Imperial University was renamed the Faculty of Engineering of Kyushu University. Since that time, as one of the key faculties of the leading universities in Japan, the faculty has contributed to the development of engineering, technology, and industry, providing leading research and enhanced engineering education. Over the last 100 years, the faculty has produced over 49,000 graduates. The Faculty of Engineering comprises six departments: Architecture, Electrical Engineering and Computer Science, Materials Science and Engineering, Earth Resources, Marine and Civil Engineering, Energy Science and Engineering, and Mechanical and Aerospace Engineering, providing basic education in every engineering field.

The graduate schools in Kyushu University include several engineering graduate schools. In addition to the Graduate School of Engineering, which mainly has students of Materials Science and Engineering, Earth Resources, Marine and Civil Engineering, Mechanical and Aerospace Engineering, the University has the Graduate School of Information Science and Electrical Engineering, the Interdisciplinary Graduate School of Engineering Sciences, and the Graduate School of Human-Environment Studies. The Faculty of Engineering enrolls nearly 800 students every year, and about 85 per cent of them pursue further studies and research at a higher level in the graduate schools.



The number of students

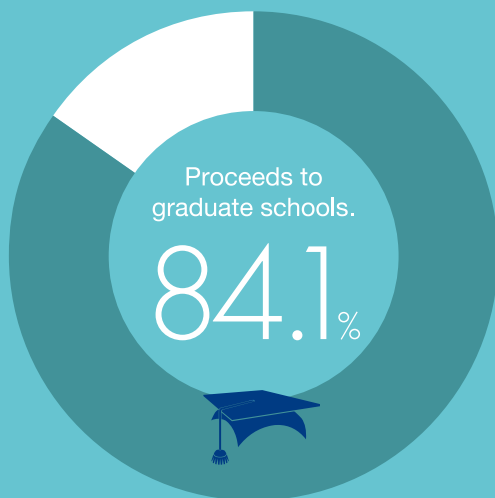


The number of students

3,498

The number of female students

338



QS World University Rankings by Subject in 2019

Four subject areas ranked in the top 100 in the QS World University Rankings by Subject in 2019

- Materials Science
- Engineering Mineral & Mining
- Chemistry
- Engineering Chemical

Facts and Figures of School of Engineering, Kyushu University

(As of May 1, 2019)

Number of faculty members

398



Faculty

Students

1:6

faculty - to - student ratio
We can provide education and research individually tailored to each student.

Total number of Kyushu University faculty members

2,391

Research expenses

\$31,015,890

(Total number of research :655)

Ito Campus site area

Soccer field

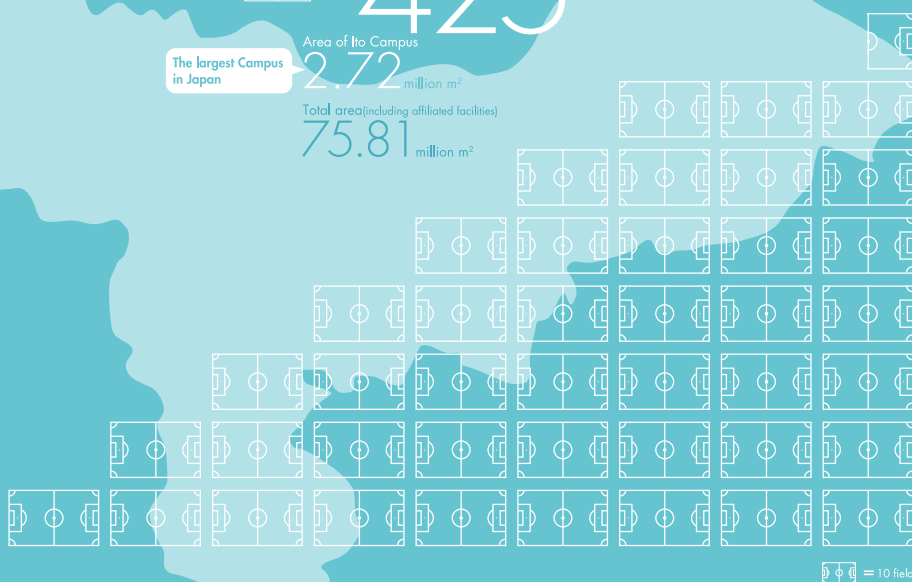


×425

The largest Campus in Japan

Area of Ito Campus
2.72 million m²

Total area (including affiliated facilities)
75.81 million m²



Fukuoka, as revealed through data

Area/343.46km²
Population/1,588,924

Fukuoka City (2019.6.1)

Population increase



among ordinance-designated cities

Ratio of youth



people between 10 and 29 years old

Number of international students in Fukuoka Prefecture



nationwide

Food affordability

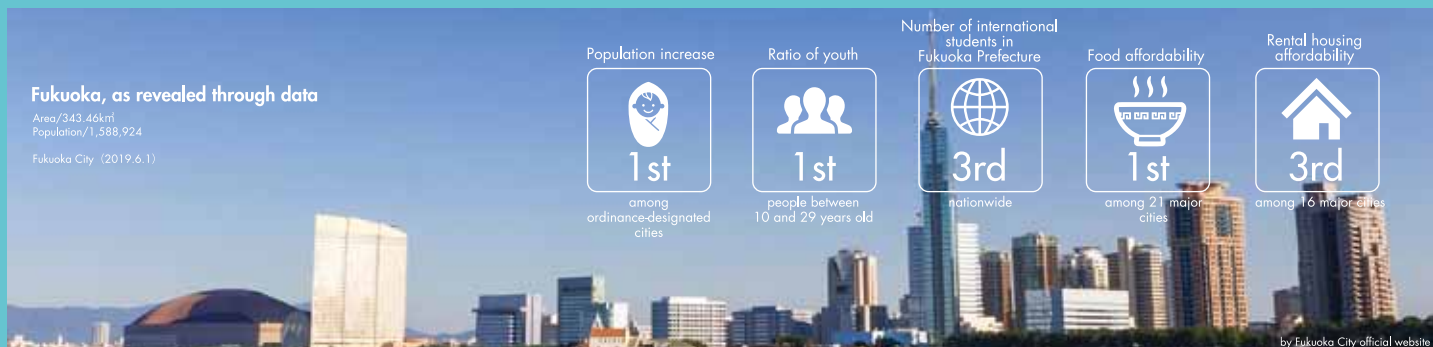


among 21 major cities

Rental housing affordability

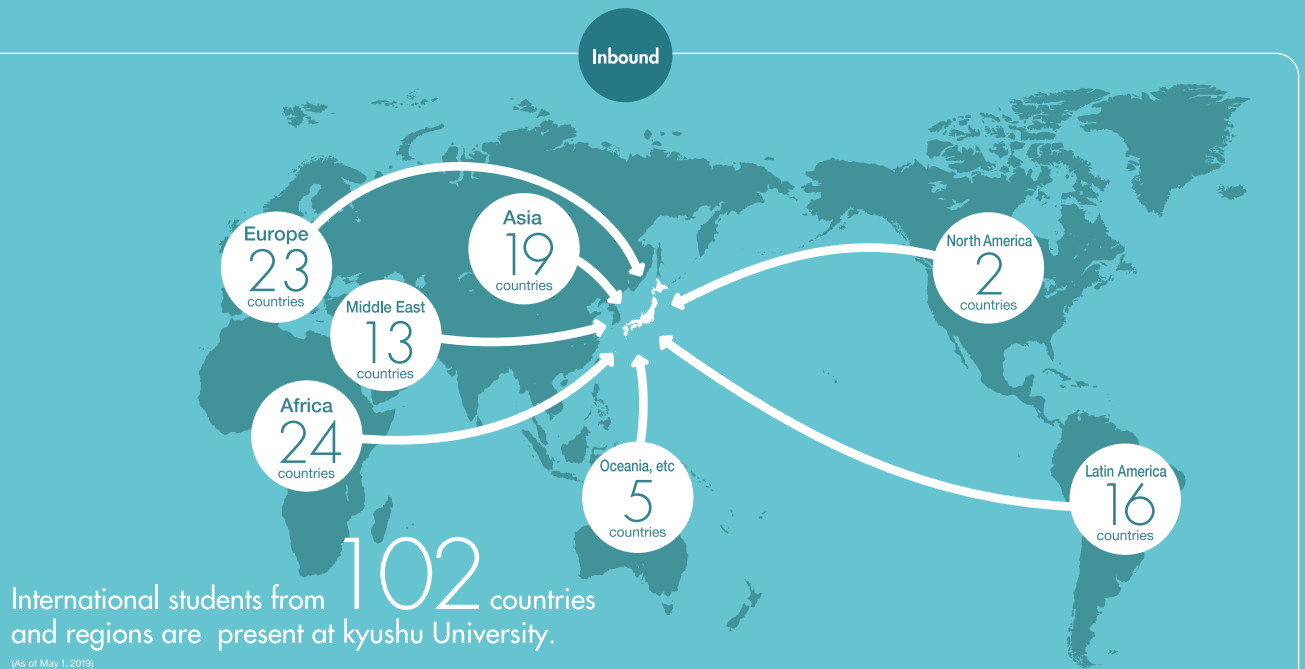
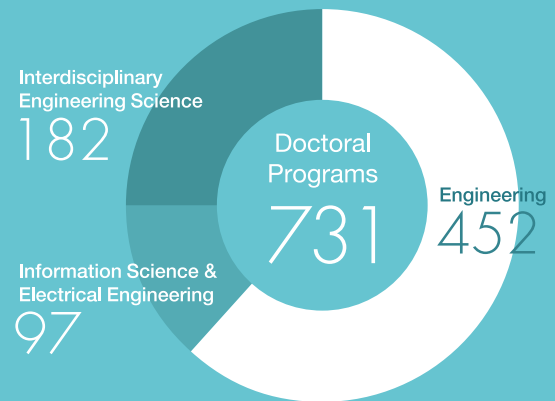
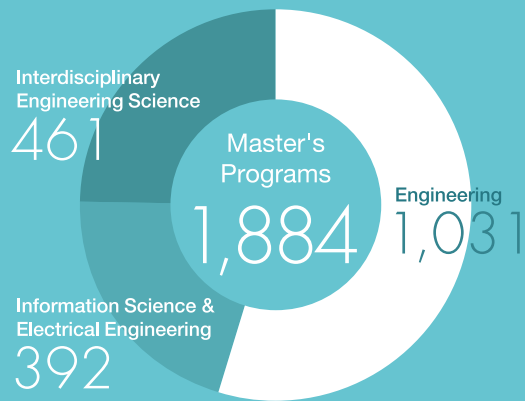


among 16 major cities



by Fukuoka City official website

Number of Graduate Students in Engineering Field



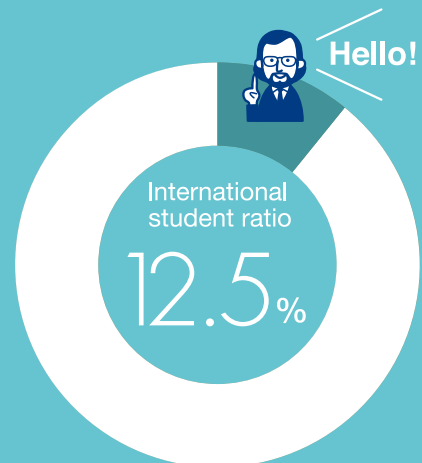
The number of international students

2,387

The number of University students

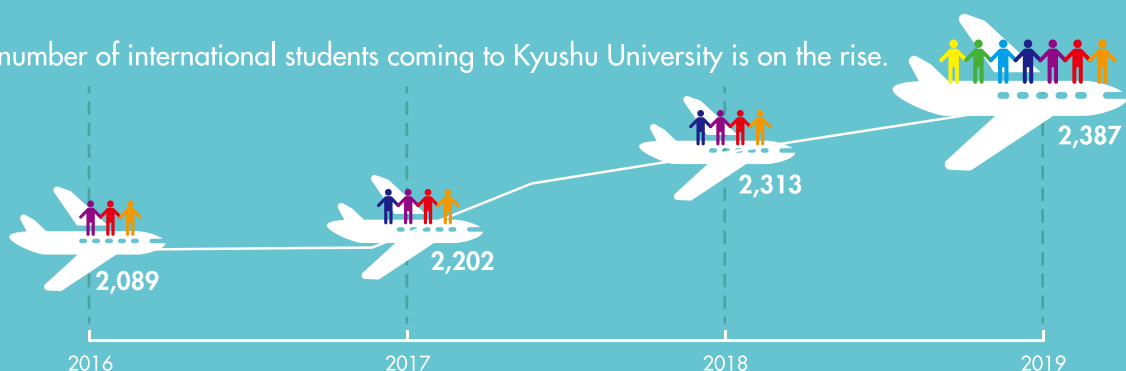
19,144

=



One out of every eight students is from overseas.

The number of international students coming to Kyushu University is on the rise.



[source] The Summary of Result on an Annual Survey of International Students in Japan FY2017 (Independent Administrative Institution Japan Student Services Organization)
(As of May 1, 2019)

Departments

▼ Graduate

Department of Chemistry and Biochemistry
Department of Materials Process Engineering
Department of Materials Physics and Chemistry
Department of Chemical Systems and Engineering
Department of Civil and Structural Engineering
Department of Urban and Environmental Engineering
Department of Maritime Engineering
Department of Earth Resources Engineering
Cooperative Program for Resources Engineering
Department of Applied Quantum Physics and Nuclear Engineering
Department of Mechanical Engineering
Department of Hydrogen Energy Systems
Department of Aeronautics and Astronautics

▼ Undergraduate

Department of Electrical Engineering and Computer Science

Department of Materials Science and Engineering

Chemical Engineering Course
Applied Chemistry Course
Materials Engineering Course

Department of Earth Resources, Marine and Civil Engineering

Civil Engineering Course
Naval Architecture and Marine Systems Engineering Course
Earth System Engineering Course

Department of Energy Science and Engineering

Department of Mechanical and Aerospace Engineering

Mechanical Engineering Course
Aeronautics and Astronautics Course

Department of Architecture

International Undergraduate Programs

Applied Chemistry Program
Civil Engineering Program
Electrical Engineering and Computer Science Program
Mechanical and Aerospace Engineering Program



海外オフィス Overseas branch offices

九州大学では、「世界的規模での競争的協力関係の構築」という本学の国際戦略に沿って、海外からの優秀な留学生の獲得、及び、海外における学術情報の発信・収集を行うため、海外オフィスを設置しています。

Kyushu University established overseas offices in the following places with the aim of recruiting outstanding international students and transmitting and gathering academic information abroad, according to its international strategy of building a competitive and corporative relationship on a global scale.



海外オフィスへご連絡される場合は、国際交流推進室へお問合せ下さい。
Global Gateways Kyushu University
TEL : +81-92-802-2223 / FAX : +81-92-802-2286
E-mail : intlssuishin@jimu.kyushu-u.ac.jp

Overseas offices



① London (United Kingdom)



② San Jose (United States)



③ Munich (Germany)



④ Seoul (South Korea)



⑤ Beijing (China)



⑥ Washington, D.C. (United States)



⑦ Cairo (Egypt)



⑧ Hanoi (Vietnam)



⑨ Taipei (Taiwan)



⑩ Ankara (Turkey)

Branch offices



⑪ Yogyakarta (Indonesia)



⑫ Bangkok (Thailand)



九州大学 工学部
大学院工学府・大学院工学研究院
〒819-0395 福岡市西区元岡744
TEL 092-802-2722

**SCHOOL OF ENGINEERING
GRADUATE SCHOOL OF ENGINEERING**
744 Motoooka Nishi-ku Fukuoka
819-0395 JAPAN

For Japanese >>
<http://www.eng.kyushu-u.ac.jp/>

For English >>
<http://www.eng.kyushu-u.ac.jp/e/>

